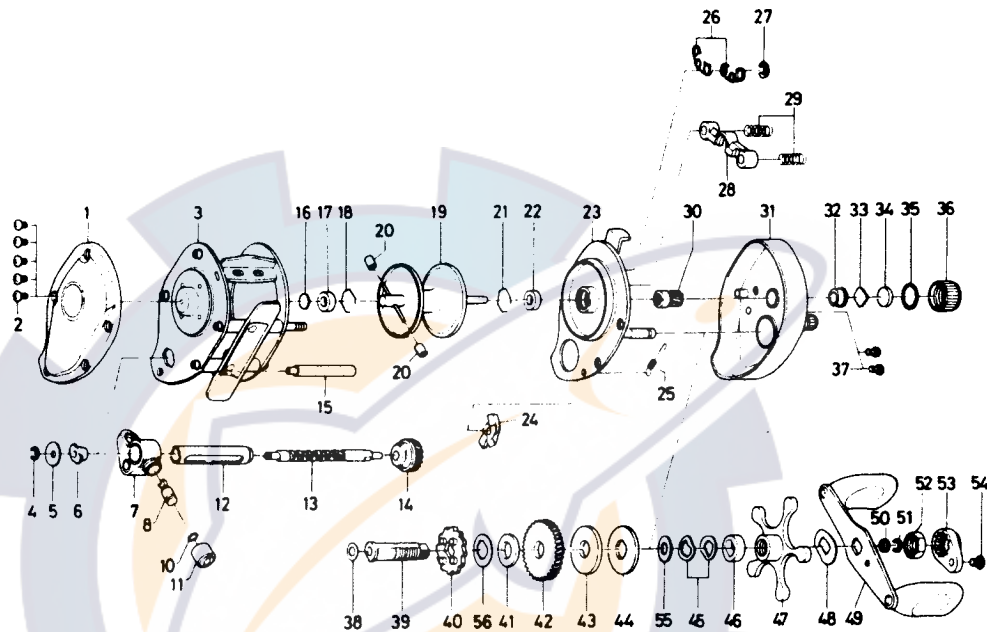




BAITCASTING REEL PS10G



| Key No. | Parts No. | Parts Name | Key No. | Parts No. | Parts Name |
|---------|-----------|--------------------------|---------|-----------|---------------------------|
| 1 | B36-1304 | Left side plate | 29 | 144-7101 | Yoke spring |
| 2 | B36-0401 | Left side plate screw | 30 | B87-0901 | Pinion gear |
| 3 | E18-3101 | Frame assembly | 31 | E09-6902 | Right side plate |
| 4 | 320-5901 | Worm shaft retainer | 32 | B64-3101 | Bushing B |
| 5 | 376-1801 | Worm shaft holder washer | 33 | B17-5401 | Spool adjusting cap metal |
| 6 | B71-5601 | Worm bearing | 34 | B17-5501 | Spacer B |
| 7 | B57-8701 | Line guide | 35 | 171-5201 | "O" ring |
| 8 | B91-2601 | Line guide pawl | 36 | B35-7304 | Cast control cap |
| 10 | 375-4100 | Line guide washer | 37 | B36-0401 | Set plate screw |
| 11 | 342-4801 | Pawl cap | 38 | 373-76 11 | Drive shaft washer A |
| 12 | B99-1801 | Level wind guard | 39 | B35-9602 | Drive shaft |
| 13 | B99-1901 | Worm shaft | 40 | B86-5101 | Anti-reverse ratchet |
| 14 | B99-2001 | Worm shaft gear | 41 | 375-7103 | Drag washer A |
| 15 | B36-3401 | Stabilizer bar | 42 | B85-2101 | Drive gear |
| 16 | 375-7400 | Spacer A | 43 | B36-0202 | Drag washer B |
| 17 | B55-0301 | Bushing A | 44 | B36-0301 | Key washer |
| 18 | B42-1601 | Bearing retainer | 45 | 150-8901 | Drag spring washer |
| 19 | E01-1502 | Spool assembly | 46 | 634-5801 | Spacing sleeve |
| 20 | B35-2901 | Brake collar | 47 | B57-8201 | Star drag |
| 21 | B42-1601 | Bearing retainer | 48 | 150-9001 | Friction washer |
| 22 | B55-0301 | Bushing A | 49 | E09-7001 | Handle assembly |
| 23 | B57-7903 | Set plate | 50 | B41-1701 | Drive shaft washer B |
| 24 | B68-2801 | Anti-reverse pawl | 51 | 320-8202 | Drive shaft retainer |
| 25 | B35-8901 | Anti-reverse pawl spring | 52 | B43-3601 | Handle nut |
| 26 | B12-7601 | Set plate spring | 53 | B43-3902 | Handle nut plate |
| 27 | 320-1402 | Clutch retaining ring | 54 | 351-1801 | Handle nut plate screw |
| 28 | B35-9001 | Yoke | 55 | 373-7803 | Drag washer C |
| | | | 56 | B95-7501 | Drive shaft washer C |